

26 Ft Mobile Spay-Neuter Clinic

With Separate Surgery Suite

SPAY-NEUTER OUTREACH | MOBILE ADOPTIONS

DISASTER RELIEF | EDUCATIONAL



Impacting animal lives
in your community

(602) 715-2814 | MagnumMobilesv.com



Prepping For Exam



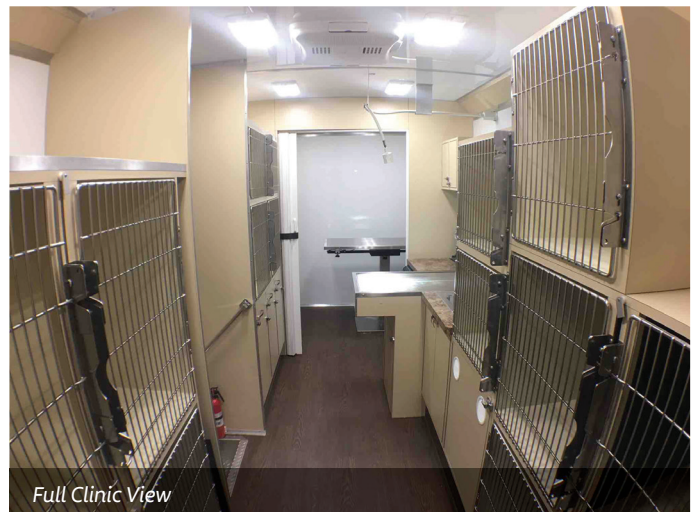
Surgery Suite

Standard Clinic Specifications:

- E450 Chassis w/ 55 Gal Fuel Tank
- 7Kw ONAN EFI Gas Generator w/ Remote Start
- 8 Interior LED Light Fixtures
- Exterior Color- Ford Oxford White
- Exam/Prep Table-T Style
- AGM Aux. Battery
- Flat Top Surgery Table with Hydraulic & Tilt
- Cages, Cabinetry & Storage (Built to Floorplan)
- 30" Swing Entry Door w/ Window & Deadbolt
- Stainless Steel Sink with Faucet, Water Pump
- 2 Air Conditioners 15 K Thermostat Controlled
- 110 Outlets on Interior (Built to Floorplan)
- Ext Measures Approx. 26 Ft L x 8 Ft W x 11 ½ Ft H
- Interior Height- 84 inch
- Cab Seating- Grey Vinyl
- Commercial Flooring w/ 1 ½ " Foundation
- 50 Amp Landline, 15 Amp Charger, Auto Transfer Switch
- Window with Screen & Blind
- Pass Thru to Cab with Locking Door
- Solid or Clear Upper Cabinets
- Slam Shut Latches for Cabinets & Drawers
- Thicker Walls & Ceiling (Approx. 3") Better R-Value
- 48" Open Isle Space for Comfortable Work Area
- Fire Extinguisher, Carbon Mon. Detector & Safety Triangles
- 20 Gal Grey Holding Tank
- 15 Gal Fresh Water Tank
- Refrigerator-DC
- 5 year Warranty



Entry Cages



Full Clinic View

“Building *your* mobile workplace, with *your* specific needs in mind”



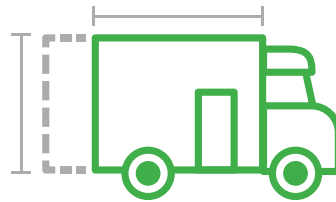
Magnum Mobile has developed many wonderful client relationships and our family is growing rapidly through our commitment to high quality materials and world-class workmanship. Magnum Mobile prides itself on the focus we give to the individual needs of our client’s making sure we provide the most optimal and easy-to-use mobile workplace. We guarantee superb service throughout our partnership, even after your specialty vehicle leaves our manufacturing facility.

3 Step Process



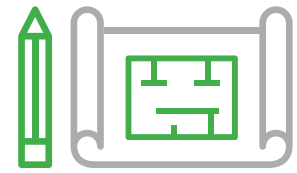
1

Identify your services and determine how many staff members will be working inside the mobile unit.



2

Identify the size of the mobile unit needed for your services and team size.



3

Determine and create a floorplan for your ideal mobile workplace.

“Working with Magnum Mobile was a breeze. Magnum understood our vision and their team worked with us from start to finish. Definitely top rate customer service. Although we expect our unit to last for many, many, many years to come but if we are ever in the market again we will certainly purchase from Magnum Mobile.”

—ANNIE BENEDICT FROM HUMANE SOCIETY OF CENTRAL ARIZONA



**Same Day
Response**



**5 Year
Warranty**



**On-Going Relationship
Before-During-After Your Build**



Teamwork makes the dream work

As a leader in the Mobile Workplace Industry, Magnum Mobile Specialty Vehicles has been providing the highest quality designs and standards for both medical and animal institutions. With our commitment to high quality materials combined with our world-class workmanship and customer service, Magnum is ahead of its generation and will continue to be superior for years to come. Choosing the right manufacturer and floorplan upfront in the new build process is a key collaboration. From the start, you will want to be comfortable with your manufacture and client relations manager, as you will be working with them throughout the build of your specialty vehicle.

All mobile workplaces designed and built at Magnum have a skilled, highly trained team dedicated to your specific build. Each floorplan is reviewed and checked throughout the build for its function, purpose, and superior quality. Standard operating procedures are always in place with a double checklist to make sure each Magnum Mobile workplace will be built to last.

"We could not have been happier with the guidance, service and support we received. We had never purchased this type of vehicle and we were so happy to get valuable input and advice from your team, as well as quality customer service throughout the process. We were very pleased with the final product and it has been a great resource for our organization and the community."

—RENEE RESKO FROM HELEN WOODWARD ANIMAL CENTER

